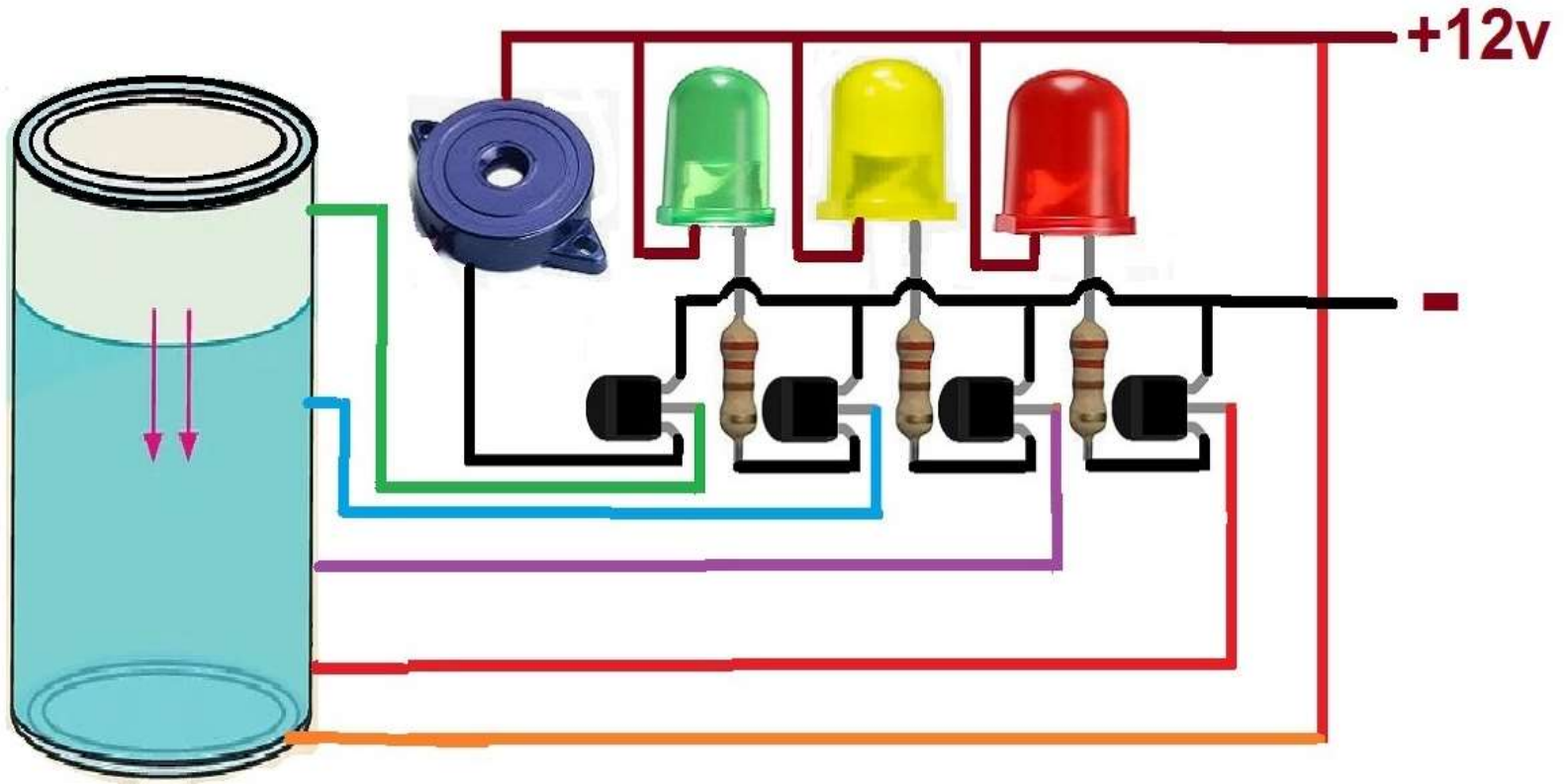


# Water Level Indicator

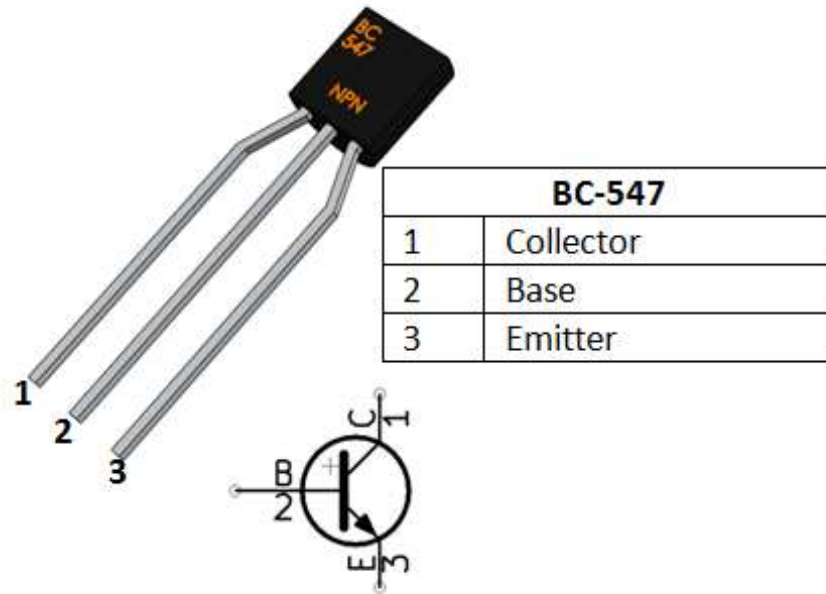


## About project

The water level indicator is defined as a system which gets the information about the water level in tanks which is used in homes. By using the water level indicator we can overcome the overflow of water from the tankers.

# BC547

**BC547 is a NPN transistor** hence the collector and emitter will be left open (Reverse biased) when the base pin is held at ground and will be closed (Forward biased) when a signal is provided to base pin.



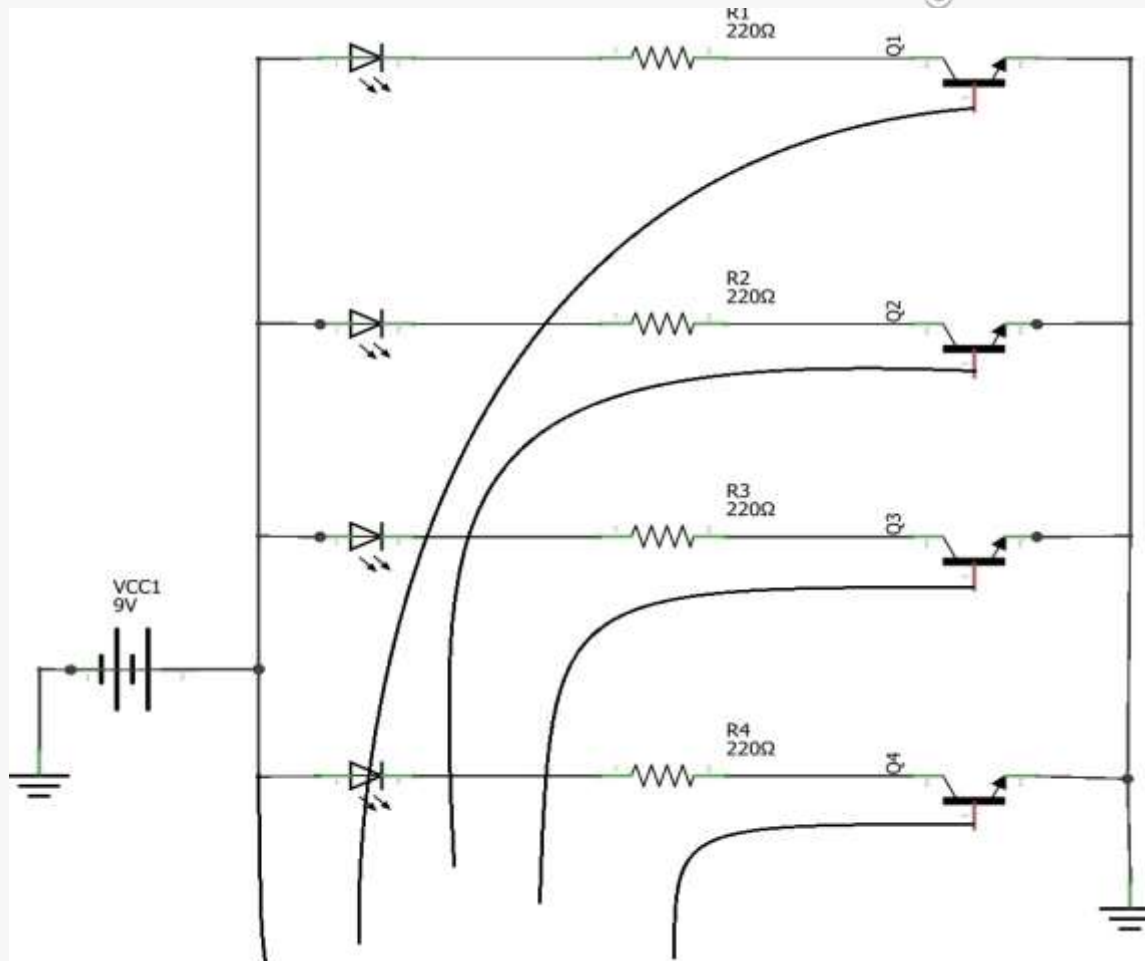
## Working of project

The circuit is based on 5 transistor switches. This project makes the transistors conduct to glow LEDs one by one and indicate the level of water. The ends of probes of the water tank level indicator are connected to corresponding points in the circuit as shown in above circuit diagram.

# Components Required

- Resistor 220ohm
- LEDs
- Transistor BC547
- One Breadboard
- One 9 Volt Battery
- One Battery Cap
- Connecting Wires

# Connection Diagram





**Project Link : <https://youtu.be/NIKWRe-KXTY>**